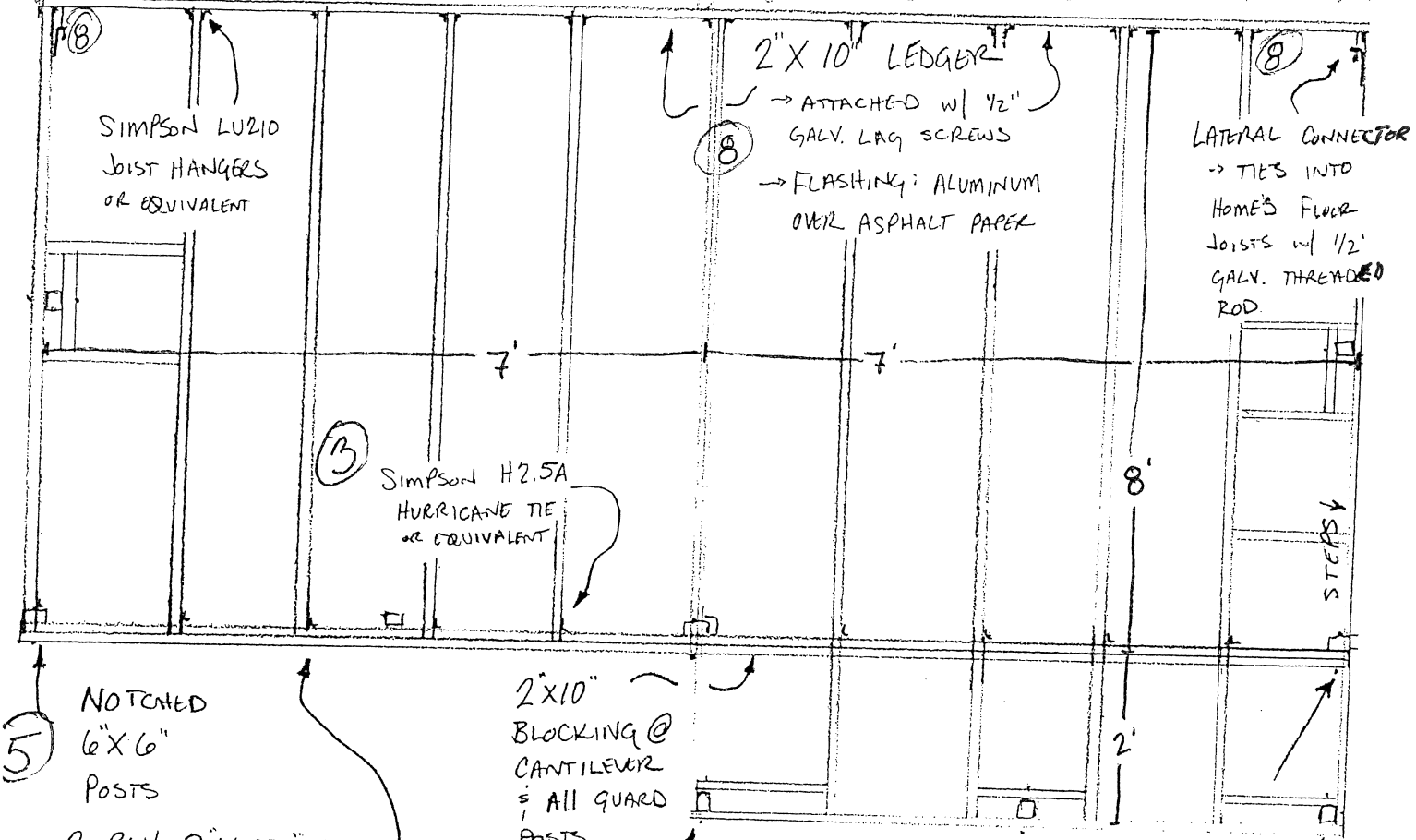


PENN TOWNSHIP 2021 RESIDENTIAL DECK GUIDE

All fields below **must** be filled out **and** noted on plans, for reference see 2015 IRC, Section 507. Also, DCA6:
<https://penntwp.org/wp-content/uploads/2020/05/Deck-Construction-Guide-2015-IRC.pdf>

<u>TOPIC</u>	<u>DCA6 REFERENCE</u>	<u>FILL IN REQUIRED ITEMS</u>
1 JOISTS		
Size, spacing (center to center), and span length?	Pgs. 3-5, Figures 1A/1B/2/5, Table 2	2" X 10" 16" O.C. B/T 8'-10' SPAN
Do joists cantilever? If so, how far?	Pgs. 3-5, Figures 1A/2/5, Table 2	SOME DO, 2'
2 BEAMS		
Size and span/length between posts?	Pgs. 5-8 & 10, Figures 3/4/5/8A, Tables 3A/B	2 PLY 2" X 10" 7' SPAN
Do beams cantilever? If so, how far?	Pg. 5, Figures 3/5	No
3 JOISTS TO BEAM CONNECTIONS		
Draw connection detail with fasteners.	Pg. 9, Figures 6/7, Table 3A	③ SHOW ON PLANS ③
4 POSTS		
Size of posts and height of deck?	Pgs. 10 & 12, Table 4	6" X 6" 8' HIGH
5 BEAM TO POST CONNECTIONS		
Draw connection detail with fasteners.	Pg. 10, Figures 8A/B/9	⑤ SHOW ON PLANS ⑤
Draw diagonal bracing.	Pg. 10, Figure 10	⑤ SHOW ON PLANS ⑤
6 PIER/FOOTING SIZE		
Size and depth of footer/piers?	Pgs. 11-13 & 17, Figure 12, Table 4	20" X 8" ROUND 36" BELOW GRADE
7 POST TO FOOTER/PIER CONNECTIONS		
Show connection details on plans.	Pg. 13, Figure 12	⑦ SHOW ON PLANS ⑦
8 LEDGER/BAND JOIST CONNECTION		
How will the joists connect to the house, type of flashing, and method of lateral support?	Pgs. 13-18 & 23, Figures 13A/B-15 & 17-21 & 35, Table 5	⑧ SHOW ON PLANS ⑧
9 GUARD/STAIR DETAIL		
Detail of guard post and stringer/tread size and method of connections.	Pgs. 19-22, Figures 24-34, Table 6	⑨ SHOW ON PLANS ⑨

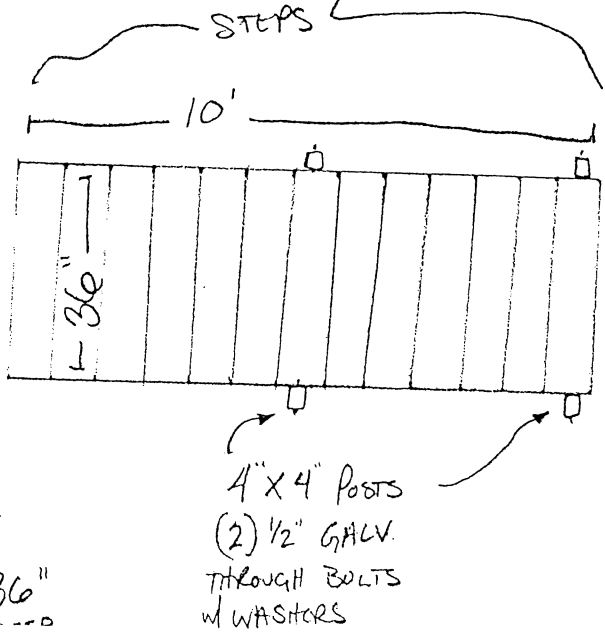
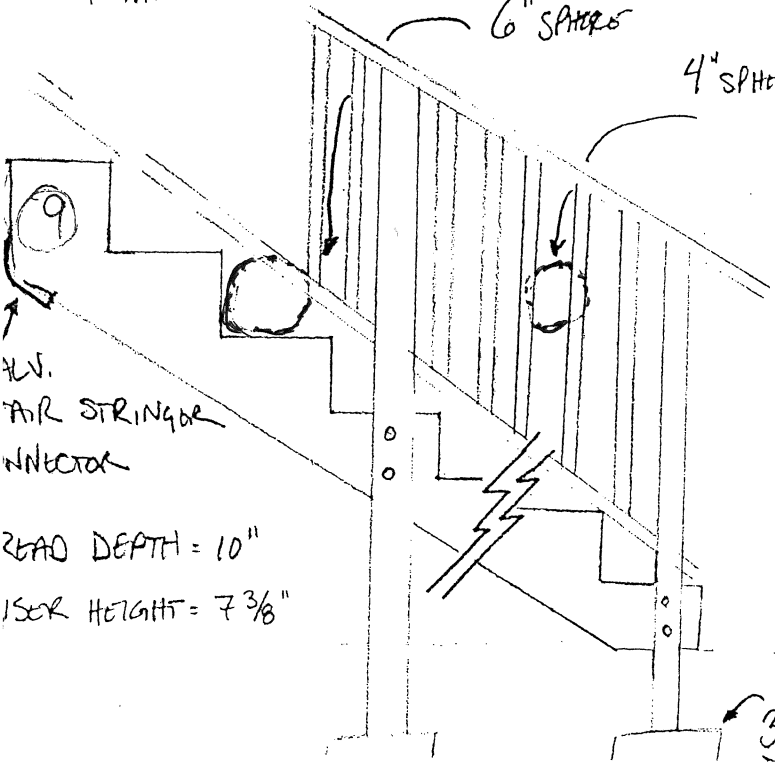
EXISTING HOUSE

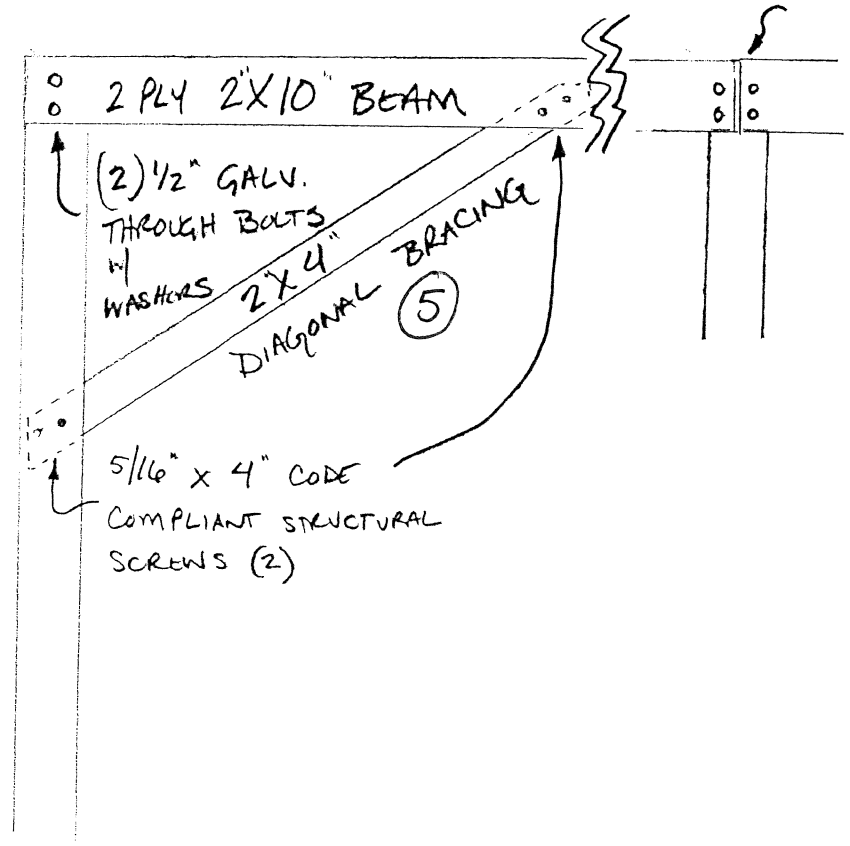
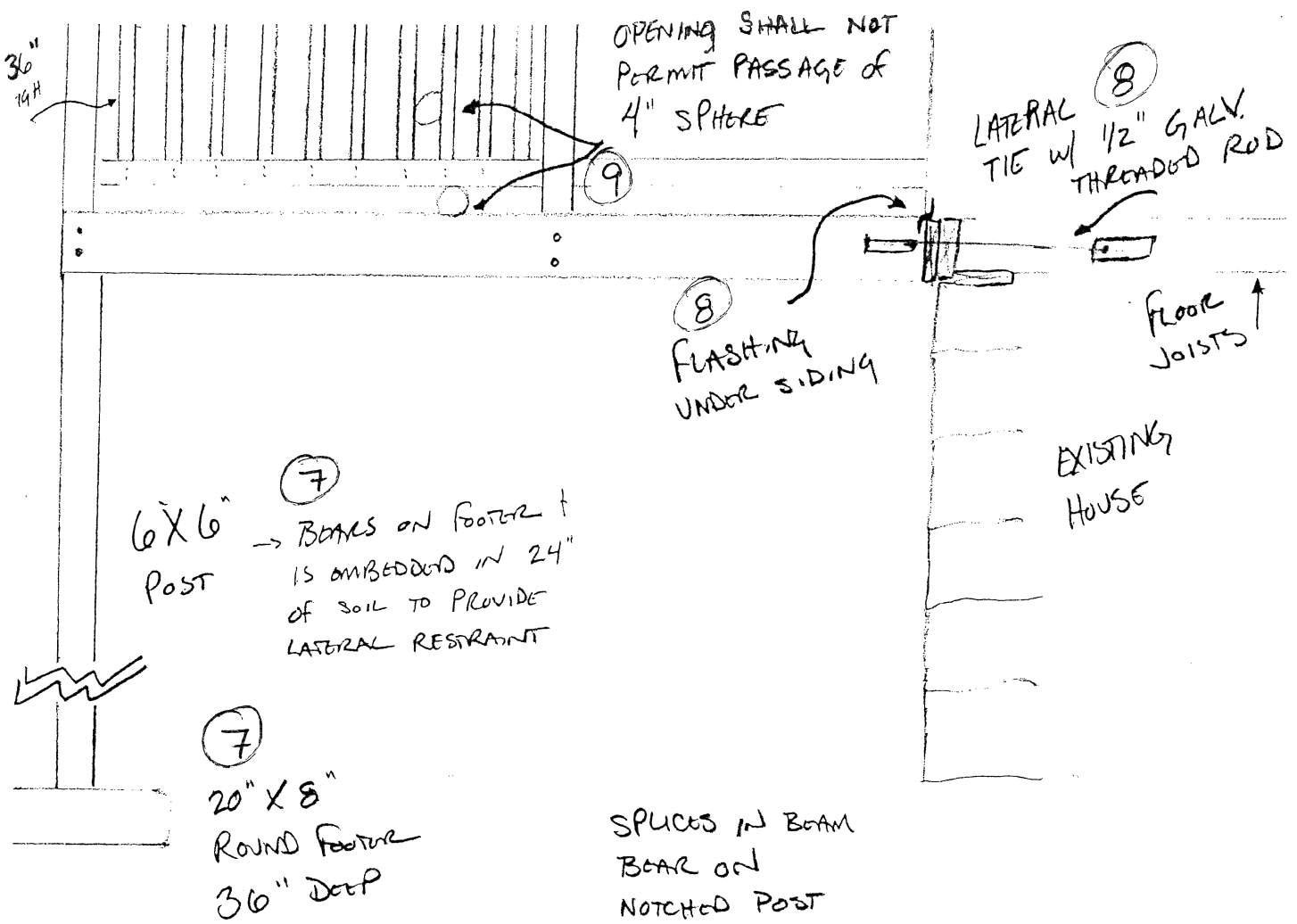


5 NOTCHED 6" X 6" POSTS
 2 PLY 2" X 10" BEAM BEARING ON 6" X 6" THROUGH BOLTED W/ (2) 1/2" GALV. BOLTS W/ WASHERS

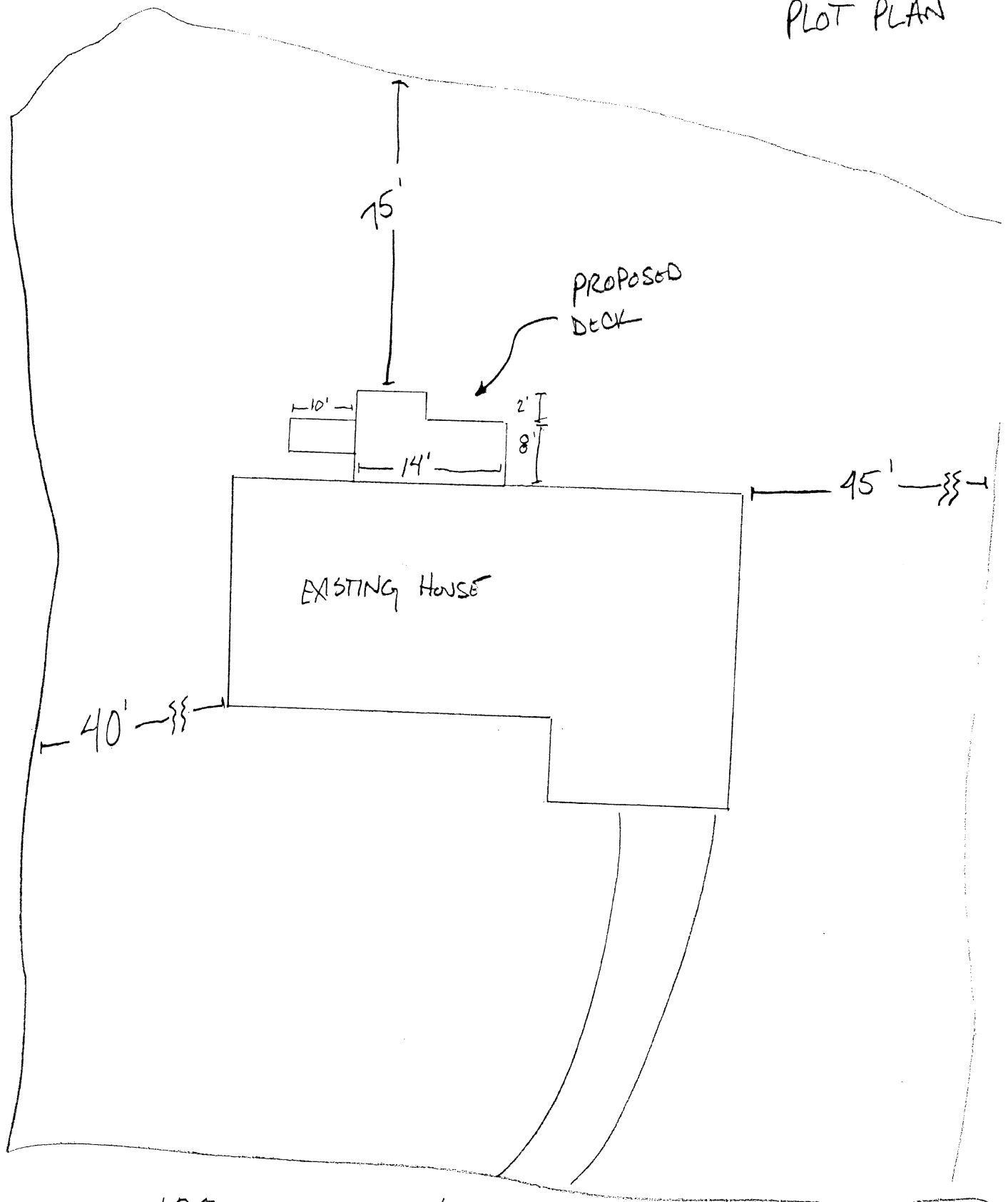
2" X 10" BLOCKING @ CANTILEVER & ALL GUARD POSTS

OPENING SHALL NOT PERMIT PASSAGE OF





PLOT PLAN



123 MAIN ST